



ECDLR Columbia City

A transit-oriented development with affordable, rental apartments, child development center and Church of Hope.

Project Summary

87 affordable
apartments

Child Development
Center

Consejo Referral and
Counseling Services

Church of Hope

ECDLR Columbia City Community Benefits

Build A Community
that is inclusive of
all people

Provide Affordable
Housing for
families

Deliver access to
early childhood
education

Church of Hope
religious services &
community events

Office Space for
Consejo Referral &
Counseling



Presenters

SMR Architects

Overall Project Design Updates & Permitting Schedule

7 Directions Architects/Planners

Implementation of Art Updates & Preliminary Design Concepts

Church of Hope & Wilkerson Design Lab

Design Updates



SMR Architects



SMR ARCHITECTS



- ULI Jack Kemp Award of Excellence, 2019
- AIA/HUD Secretary's Housing and Community Design Award, 2017
- Affordable Housing Tax Credit Coalition's Excellence Awards Hon. Mention, 2017



PLAZA ROBERTO MAESTAS



- PCBC's Golden Nugget Awards Award for Merit in Affordable Housing, 2017 •
- Puget Sound Regional Council VISION 2040 Award, 2017 •
- Futurewise Livable Community Award for Equity & Environment, 2013 •



COLUMBIA CITY STATION



HOA MAI GARDENS



MOUNT BAKER STATION

PROJECT DESIGN, PERMIT, & CONSTRUCTION SCHEDULE

Seattle Department of Transportation (SDOT)

WE ARE HERE →

Street Improvement Plans (SIP):

30% SIP – Approved on 1/27/22

60% SIP – Submitted on 3/1/22

60% SIP – Anticipated approval on 5/16/22

90% SIP – Anticipated submission on 8/31/22

100% SIP – Anticipated approval on 12/23/22

Seattle Department of Construction and Inspections (SDCI)

WE ARE HERE →

Master Use Permit (MUP):

Early Design Guidance (EDG) Packet – Submitted on 1/28/22

EDG Review – Anticipate completion on 3/9/22

MUP Submittal – March 18, 2022

Design Review Packet – Anticipated submission on 5/31/22

MUP Approval – Anticipated on 10/6/22

Building Permit:

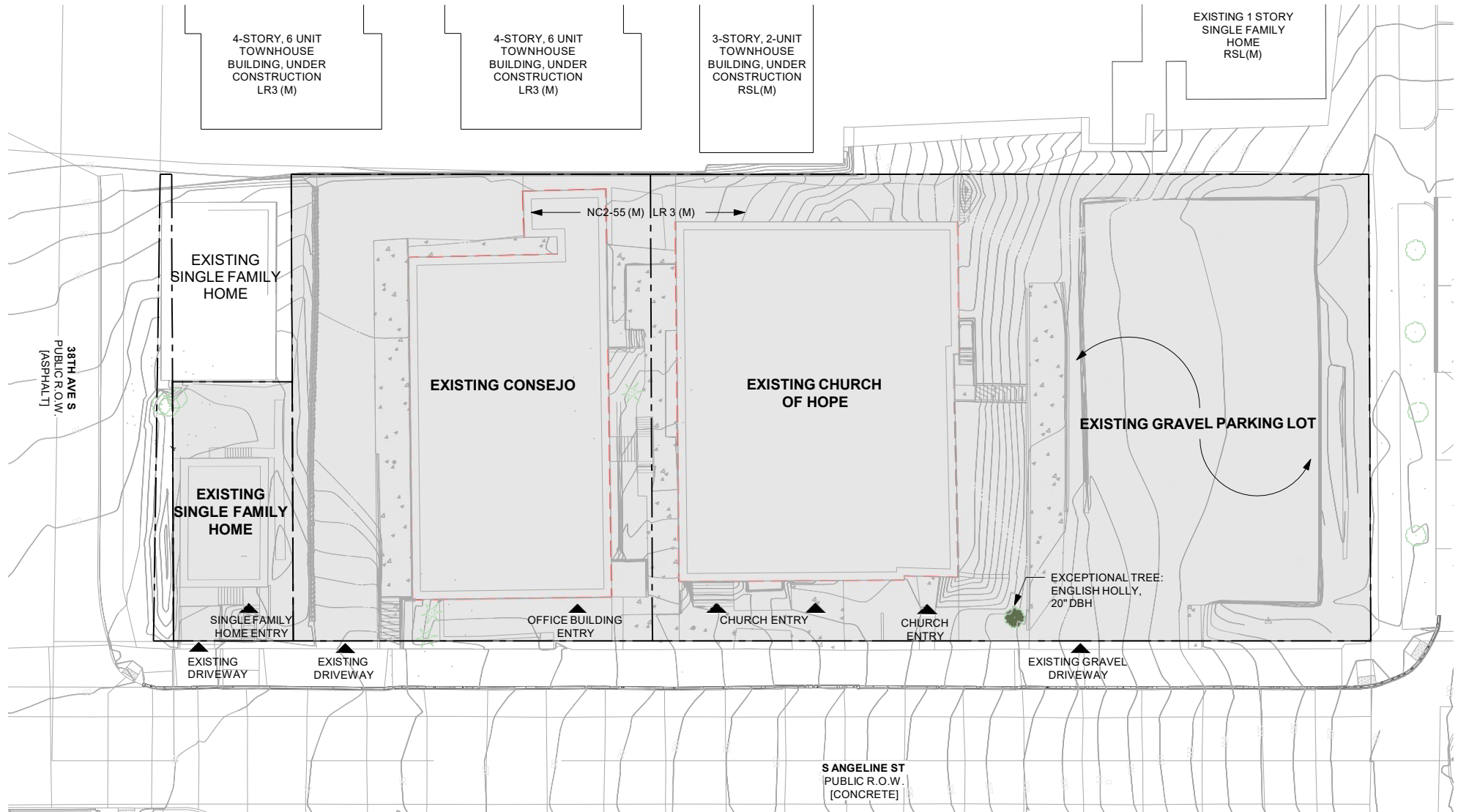
Building Permit – Submittal on 5/18/22

Building Permit Approval – Anticipated on 11/3/22

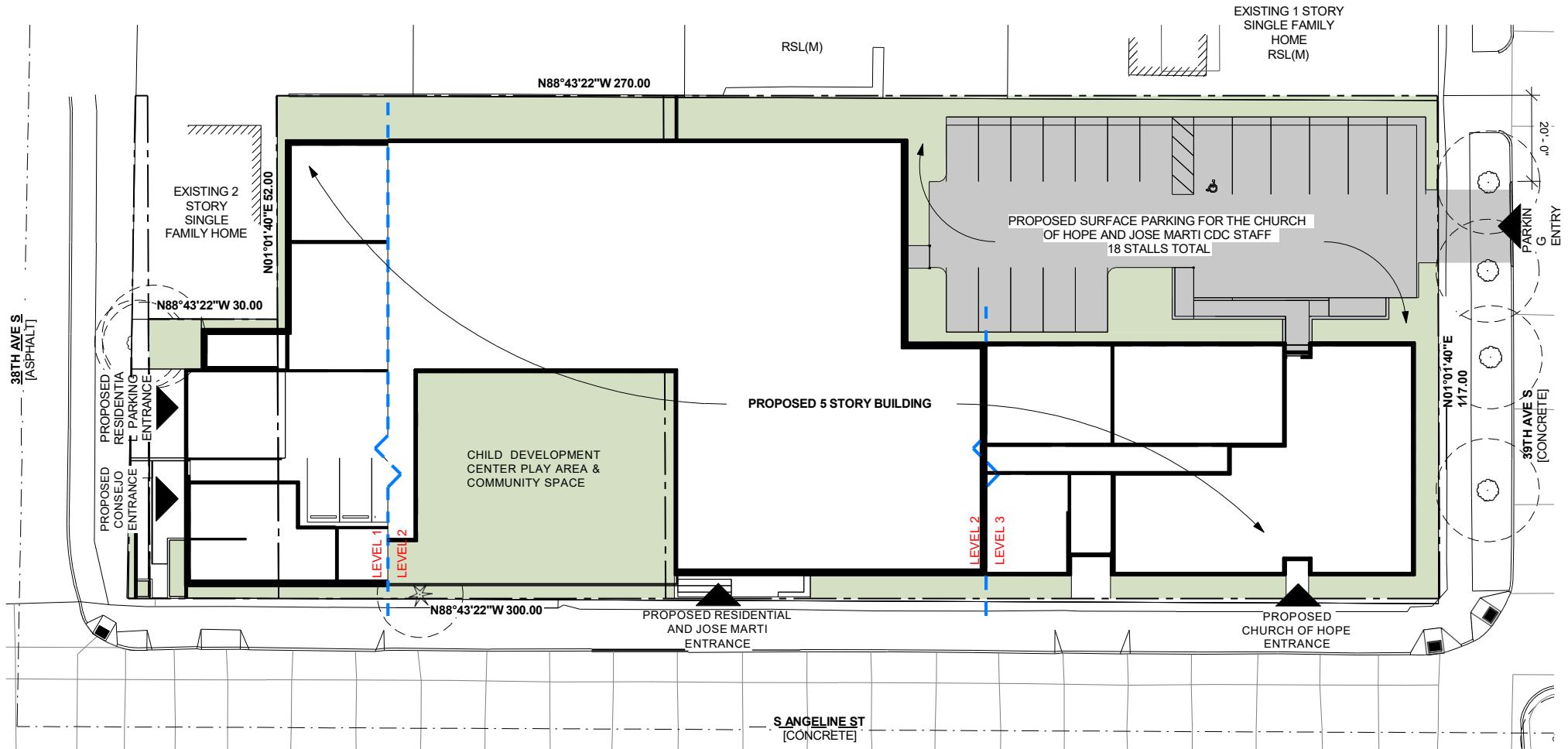
Construction:

January 2023 through mid-2024

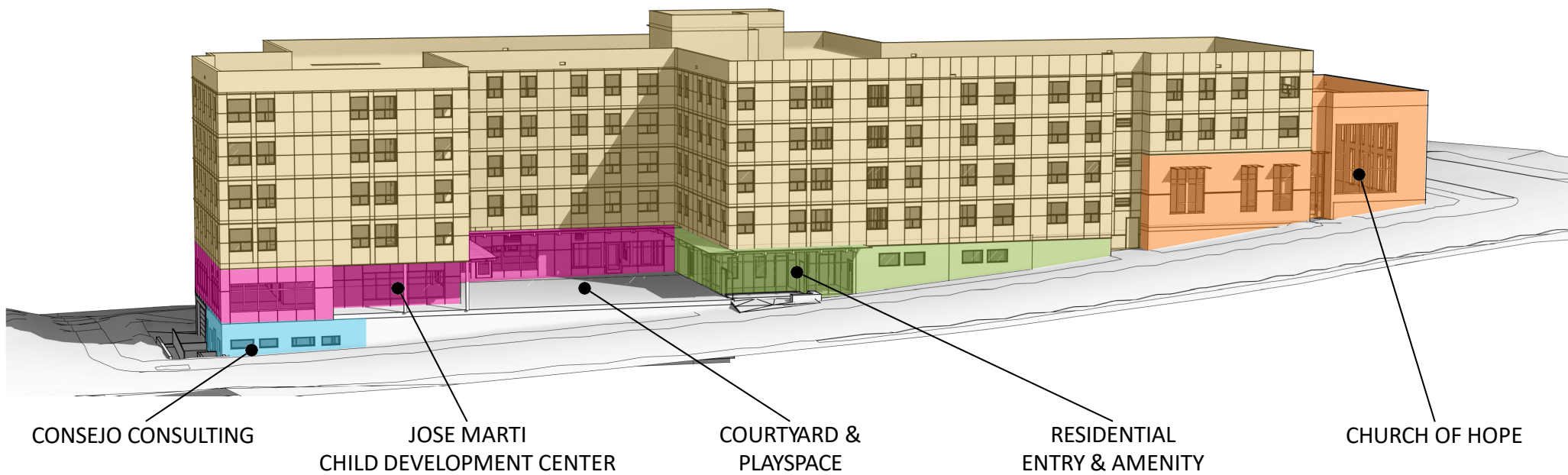
EXISTING SITE SURVEY



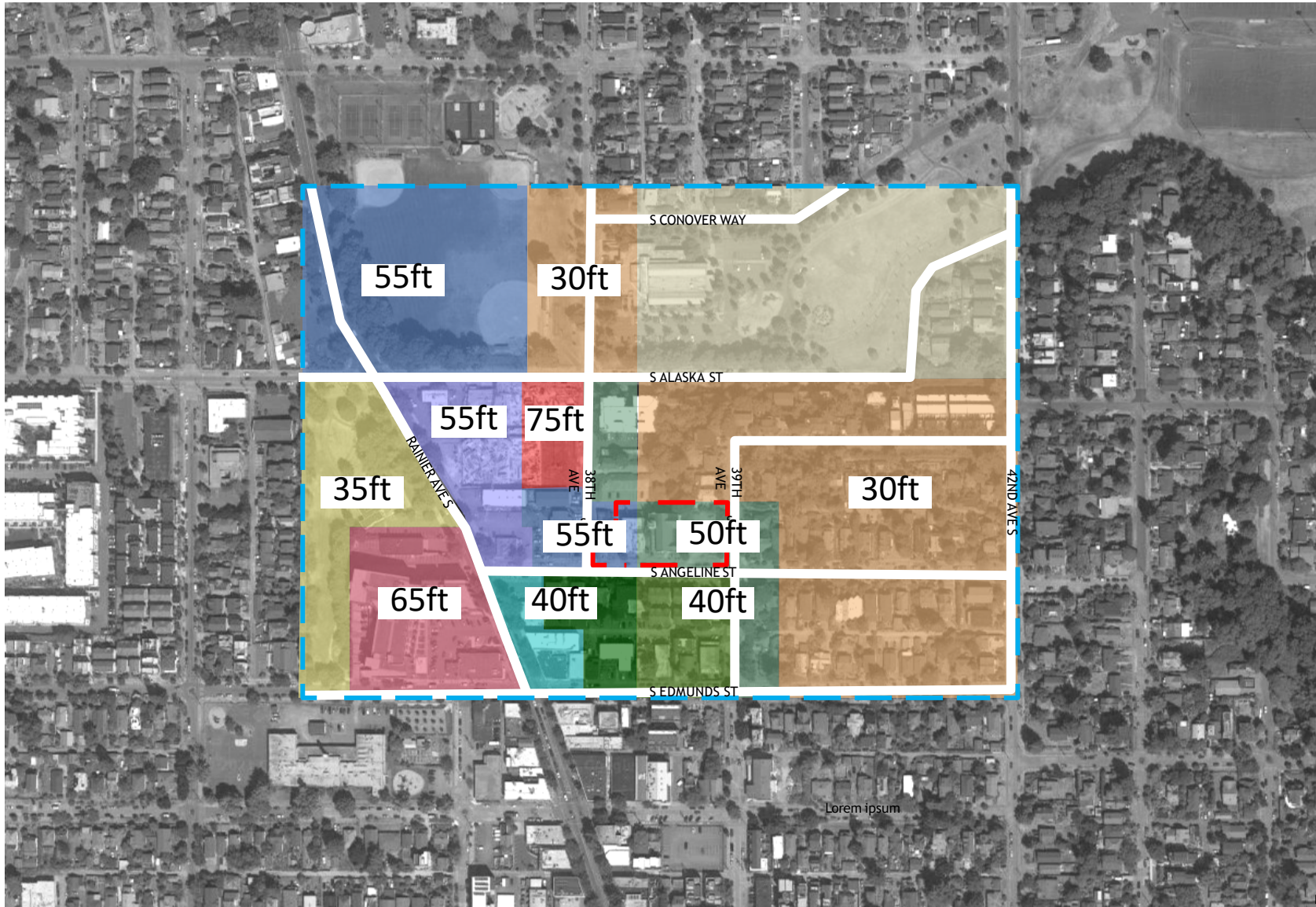
SITE PLAN



PROGRAM

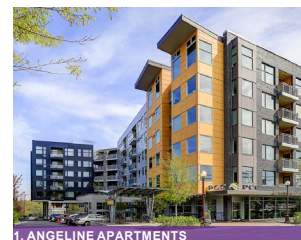
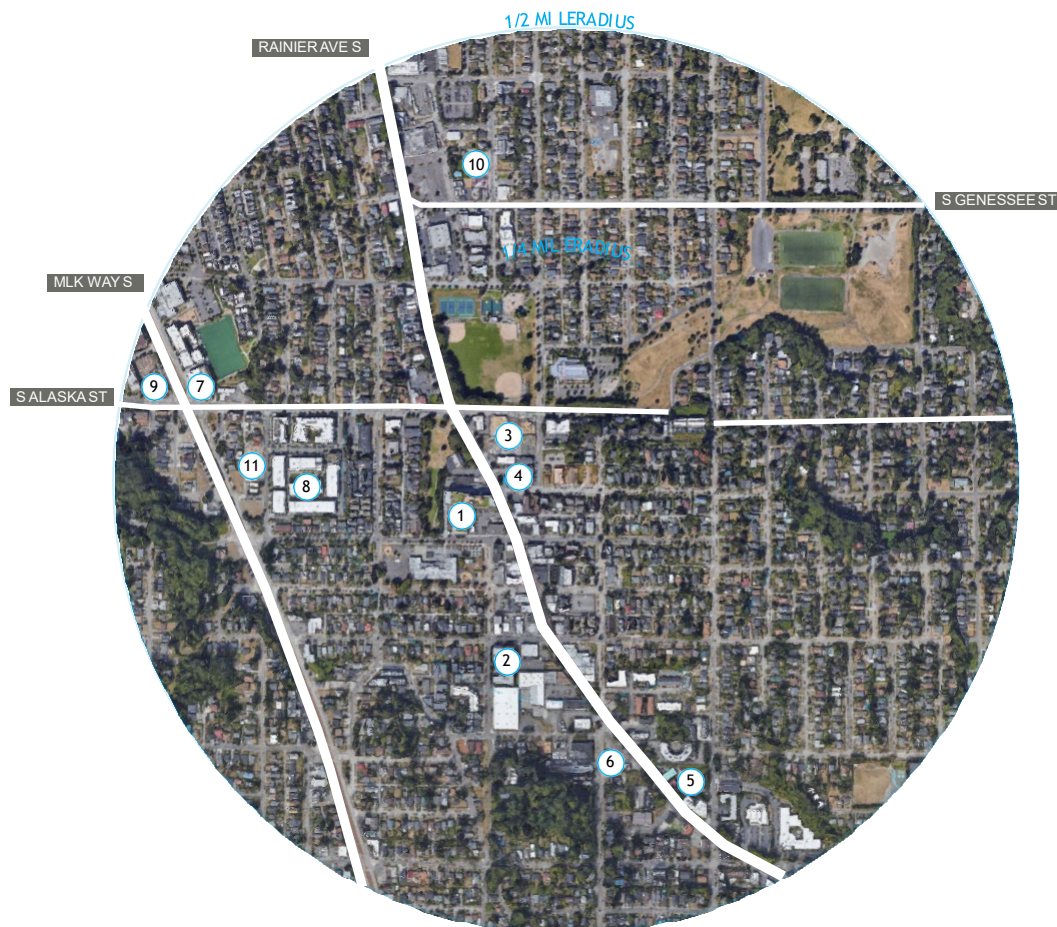


ZONING



EXISTING ZONING IN 9-BLOCK RADIUS

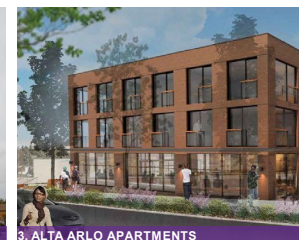
NEIGHBORHOOD SCALE



1. ANGELINE APARTMENTS



2. GREENHOUSE APARTMENTS



3. ALTA ARLO APARTMENTS



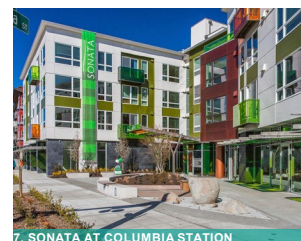
4. 3710 S ANGELINE APARTMENTS



5. 5256 RAINIER AVE S



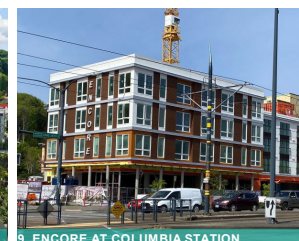
6. 5201 RAINIER AVE S



7. SONATA AT COLUMBIA STATION



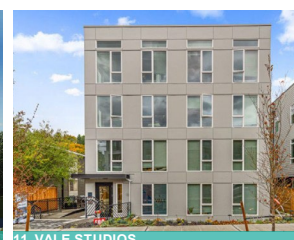
8. CITYLINE



9. ENCORE AT COLUMBIA STATION

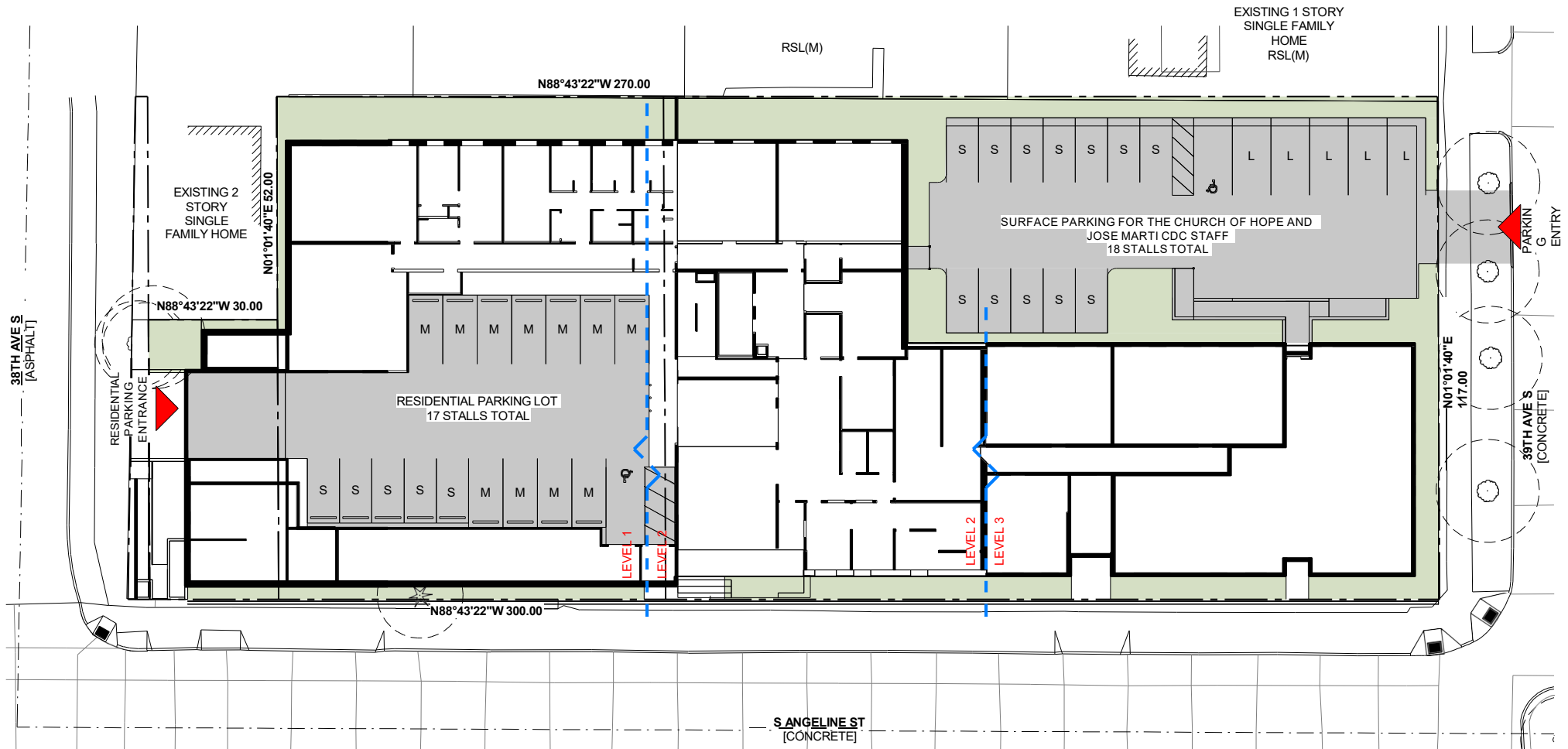


10. 4221 37TH AVE

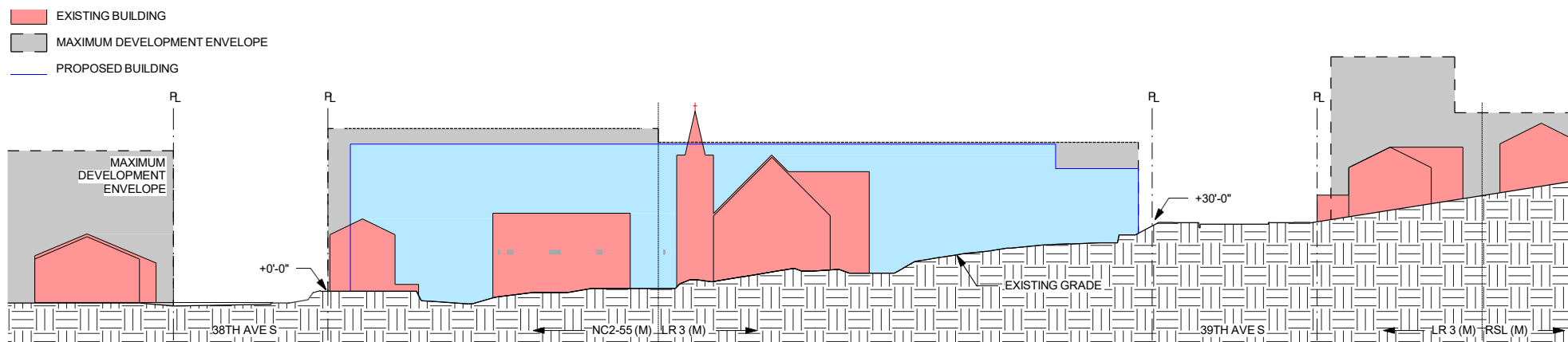


11. VALE STUDIOS

PARKING

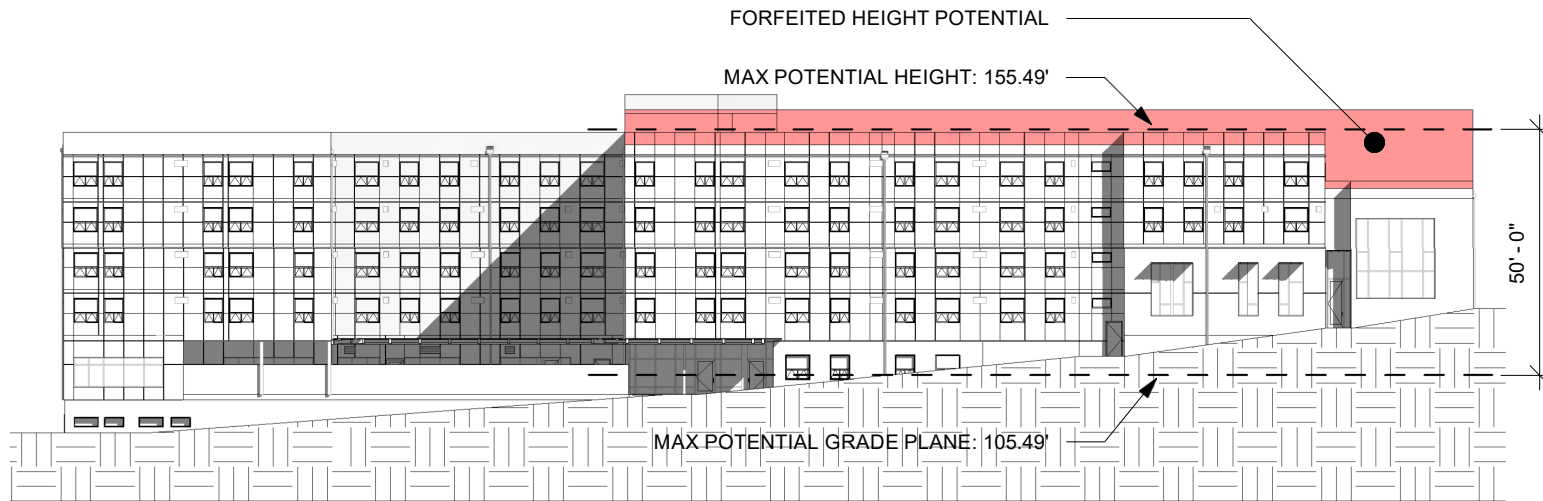


BUILDING MASSING & SCALE

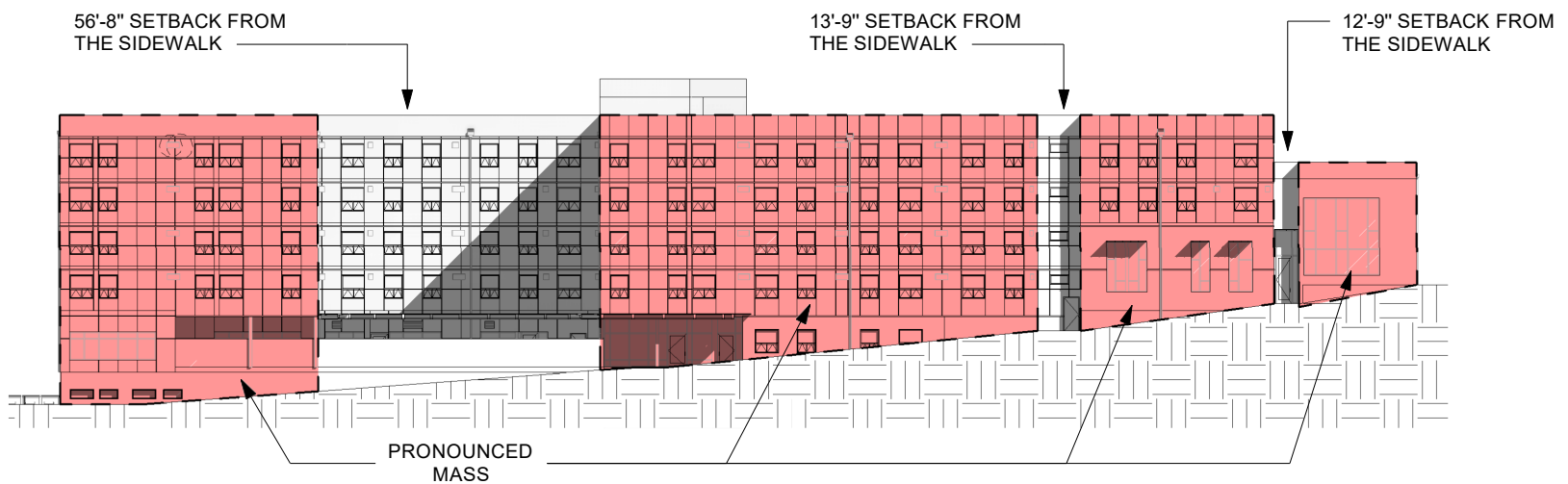


SOUTH ELEVATION

BUILDING MASSING & SCALE



SOUTH ELEVATION



SOUTH ELEVATION

COURTYARD DESIGN

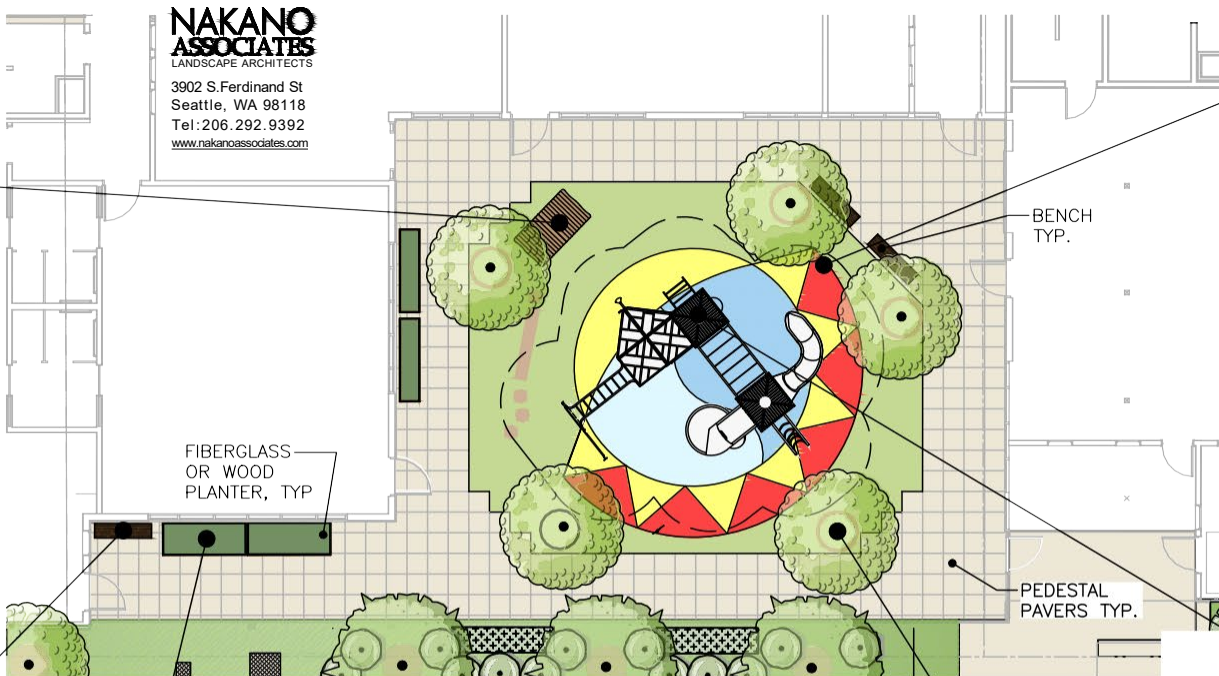


PLAY HOUSE



BENCHES

NAKANO ASSOCIATES
LANDSCAPE ARCHITECTS
3902 S. Ferdinand St
Seattle, WA 98118
Tel: 206.292.9392
www.nakanoassociates.com



PLAY GRASS



PLAY GRASS ARTWORK



RAISED WOOD PLANTERS



MUD KITCHEN



CREPE MYRTLE TREES



PLAY STRUCTURE

MATERIALS & CULTURE/ART



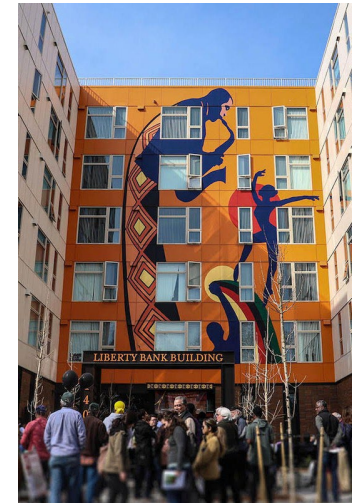
FIBER CEMENT

Example from SMR Architects



MOSAIC, TILE & ART

Example from Plaza Roberto Maestas



MURALS

Example from Liberty Bank

PERSPECTIVE





7 DIRECTIONS
architects / planners

7 Directions Architects / Planners

Cultural Design Process

- Site Research
 - Case Studies
- Art/Culture Integration
 - Concept & Artists
 - Art Locations on Building & Plaza
 - Art Elements
- Concept Development
 - Murals
 - Plaza
 - Playground
 - Fence



Case Studies



SCULPTURE WITH LIFE SIZE STATUE celebrating Roberto's vision for our Beloved Community.



MOSAIC PANELS on every building column tell the many stories of unseen minorities in Washington and their contributions to our greater community.



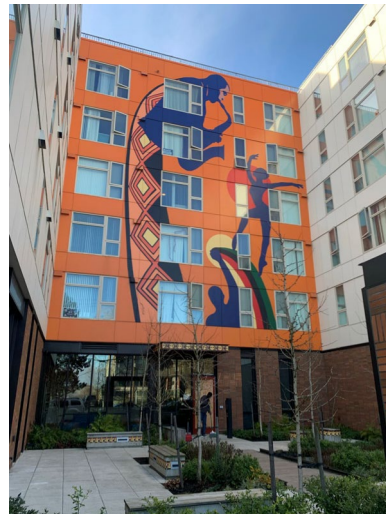
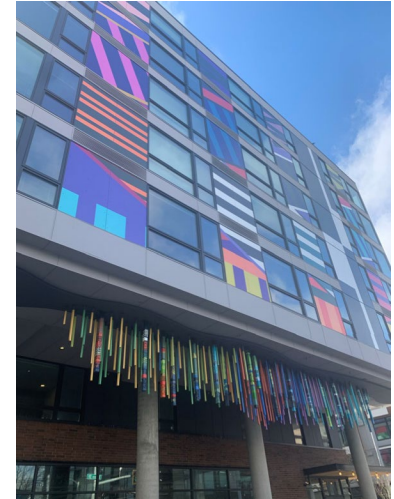
DECORATIVE PAPEL PICADO SCREENS inspired by Mexican folk art paper flags, convey the values and concepts of Mexican American pride in Washington.



THE CENTILIA CULTURAL CENTER is flanked by a mural that honors the unseen strength and support of women during the occupation and activism of El Centro de la Raza. This mural honors the strength of the women in the community.



JOSE MARTI CHILD DEVELOPMENT CENTER, a mural of Jose Marti, a symbolic historical figure who was a poet, journalist, philosopher, and activist who fought for education for minority children, is shown surrounded by children in various stages of early learning.

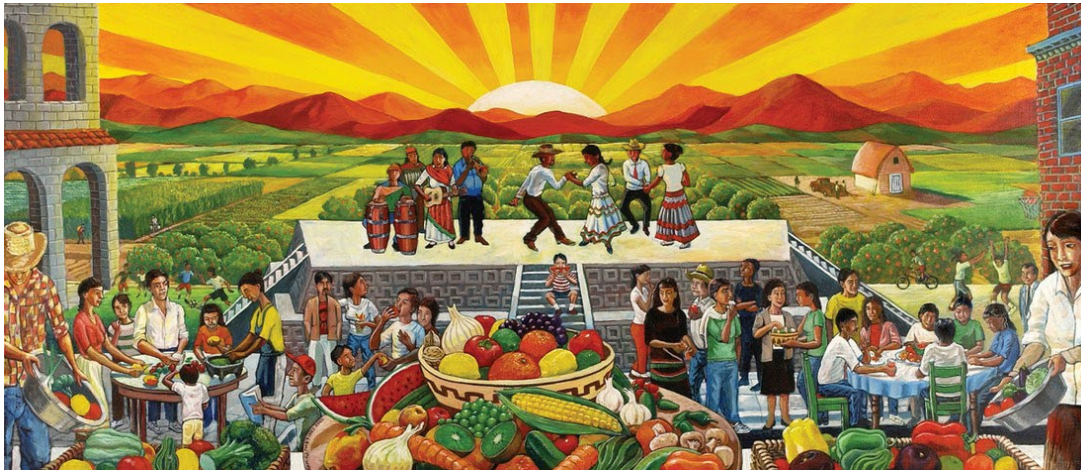


Concept

- Mestizaje: Representing Latin America and its diversity of peoples and cultures.

Selected Artists:

- Fulgencio Lazo
- Milvia Pacheco
- Maria Luisa Guillen-Valdovinos
- Gonzalo Espinoza

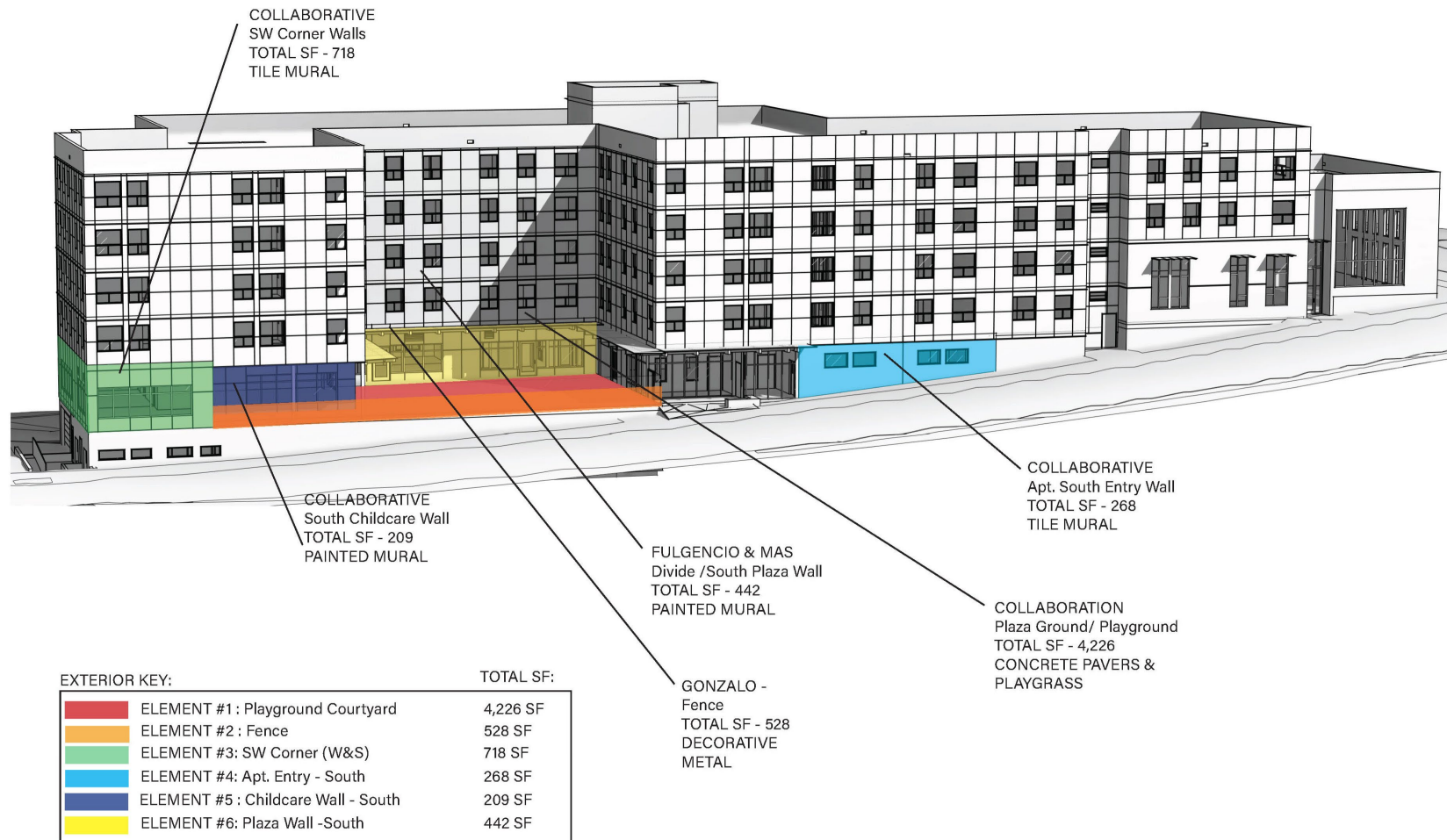


Selected Artists

- **Fulgencio Lazo** - is an artist, working predominantly with acrylics on canvas at his studios in Seattle and in his hometown of Oaxaca, Mexico. Over the last three decades he has had more than 50 solo shows. He is most known for his tireless work to create programs and spaces that are inclusive and reflect diverse audiences. He has co-founded some of Seattle's most iconic traditions within the Latino community, including Seattle's annual Oaxacan celebration known as Guelaguetza, International Children's Day, and the Day of the Dead celebrations at many venues, including the Seattle Art Museum. Fulgencio is represented by Seattle's ArtXchange Gallery.
- **Milvia Berenice Pacheco Salvatierra** - I am an Afrolatina artist born in Caracas-Venezuela, where I began my career as a dancer combining dance and theater training. Experiences with trauma at an early age fueled in me a pressing drive toward movement. I went on to devote my life to reaching liberation through art and movement. In this Journey, I have become a contemporary dancer, choreographer, performer, bodyworker, mother and Community Organizer. MÁS (Movimiento Afrolatino Seattle) has become the platform where I continue serving as a conduit for empowerment and beyond.
- **María L. Guillén-Valdovinos** - is native to Zihuatanejo, Mexico. At the age of 5 she immigrated to the Pacific Northwest. She uses the visual arts, graphics, design, tattoos, graffiti and muralism for the revitalization of the coastal, Afro-Indigenous and Purepecha culture of La costa grande and chica de Guerrero in her work.



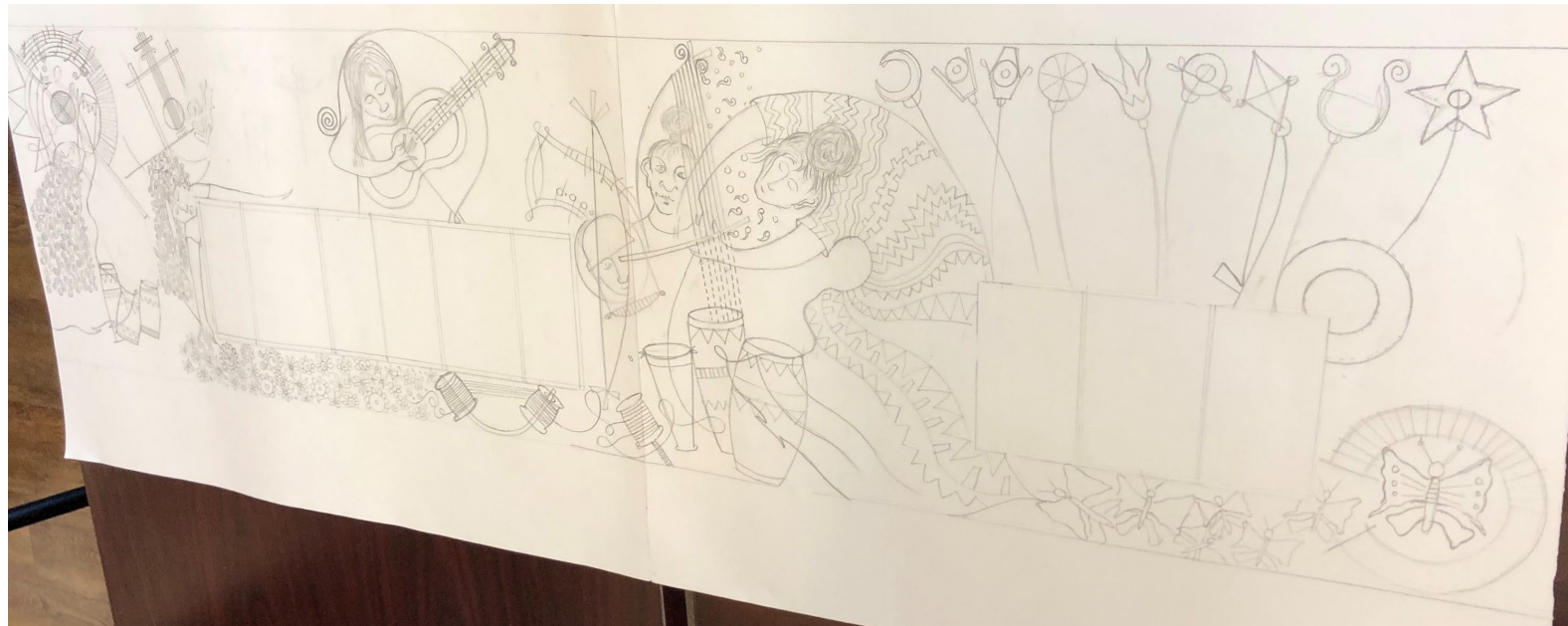
Art Locations



SW Corner Art Wall:



Tile Mural Concept: Breaking up the orthogonals with curves represented in the social tradition of the braid, which was used as an indication of a person's tribe, age, marital status, wealth, power, and religion throughout the Americas.



Residential (Apt) South Entry Wall:

Tile Mural Concept: “Viviendo compartiendo la Musica”



Plaza & Playground – Concept Development & Design Statement



The sun symbolizes strength and power, and includes vibrant and warm colors, while the moon represents calm, beauty and nurturing and are related with darker and cool colors. Both together represented in some cultures in Latin America the unit of opposites and balance. The river symbolizes a path that one must take but also highlights the descent into or out of something. This design combines these three elements in very graphic and simple lines that can be fun for the children, but also can remind us the importance and power of unity, the cycle of the seasons, the community and the importance of rituals and celebrations.

~Milvia Pacheco

Decorative Fence— Concept Development & Statement



With this piece titled “Agarrados de la mano”, I explore the idea of how we live balanced lives. The artwork features two women holding hands, their extended bodies forming a circle. They are looking straight at each other with flowers and butterflies floating between their outstretched arms. The women are dressed alike, with their long braids resting upon their backs. In fact, it almost appears as if it is a sole woman with her reflection, creating a strong sense of unity.

Each element within the piece has a symbolism: the circle is the social cohesion within our communities and solidarity through mutual aid; blue is for life, both water and the womb of motherhood; the sun and stars are the cosmos that is an umbrella of protection; the butterfly is the eternal movement of people despite great dangers who aim to put down roots in new places while maintaining their identity.

It is my hope that this sculpture in metal will be a visual reminder of our collective commitment to embrace our cultural identities.

--Fulgencio Lazo



Wilkerson Design Lab







Contact Information



Website:

<https://www.elcentrodelaraza.org/get-help/housing-economic-development/columbia-city/>

Email:

ECCCinfo@elcentrodelaraza.org

Call:

206.957.4650